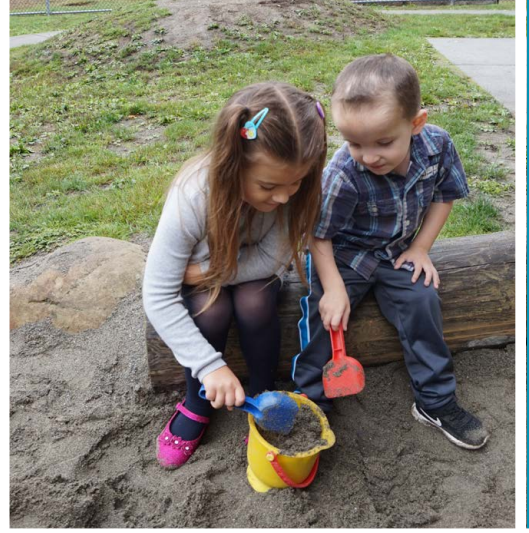


2018

Annual Report



Your Community Action Agency.
Since 1965.



Opportunity Council is your local Community Action Agency.

Working together with our supporters and partner organizations, we take the lead in organizing whatever is needed to address local emerging needs and build stronger communities. We serve people in Island, San Juan and Whatcom counties, and have expanded some services into Skagit and Snohomish counties.

For over 50 years we have offered services that range from addressing immediate and crisis needs such as food and shelter to programs that promote long-term growth and stability through job skills training, financial literacy, early childhood education, and home weatherization.

For more information about this work, please visit our website www.oppco.org



OUR MISSION

Opportunity Council helps people improve their lives through education, support, and direct assistance while advocating for just and equitable communities.

THE COMMUNITY ACTION PROMISE

Community Action changes people's lives, embodies the spirit of hope, improves communities, and makes America a better place to live. We care about the entire community and are dedicated to helping people help themselves and each other.



Greg Winter, Executive Director

Message from Executive Director

Thank you for creating a community where we can all thrive.

Last year, over 15,000 neighbors reached out to us.

Some of our aging neighbors needed help to keep their home warm in the winter. Others were in crisis, living unsheltered or struggling with addiction. Some people who had been out of work needed help getting back into the job market. And families wanting a bright future for their children enrolled in our Head Start preschool program or found high-quality child care.

With your support, services were available to help people gain stability and find a pathway out of poverty.

I'm pleased to provide this annual report showing the impact of this work. The 2018 highlights and numbers provide examples of how people are accessing healthy food, building financial skills, attaining warm, safe homes and helping kids thrive.

We don't do any of this work alone.

This is only possible because of you and many generous donors, funders, supporters and partner organizations.

I give you my sincere gratitude and appreciation for your ongoing support.

Thank you for helping provide a stronger safety net that helps and empowers neighbors who need our assistance. When every member of our community begins to thrive, our community is stronger for all of us.

*Greg Winter,
Executive Director*

PS If you haven't already, please join us on Facebook, make a donation or volunteer this month in recognition of "Community Action Month." Everything you do to support this work truly helps create a better community for all of us.

Making an Impact

Thank you for making an impact.

As your local community action agency, the Opportunity Council is proud to work in partnership with you to offer services that help everyone reach their full potential and make our community stronger.

OUR SERVICES



Helping Kids Thrive

Programs include Head Start/ECEAP, Early Head Start, SEAS, Emergency Child Care vouchers, Early Support for Infants & Toddlers.



Access to Healthy Food

Programs include Basic Food Assistance, Maple Alley Inn, Child nutrition program.



Building Financial & Job Skills

Programs include tax assistance, employment services, financial education, Asset Building, Weatherization and tech training, Early Achiever program.



Providing a Warm, Safe Home

Programs include Housing, Energy Assistance grants, Weatherization and Home Improvement, Conservation Education, Chore, Community Energy Challenge



Offering Information & Referrals

Programs include Community Resource Centers in Bellingham, Oak Harbor, Kendall, Lopez Island, Orcas Island and San Juan Island plus Child Care Resource and Information.

OUR PARTNERS



Partners & Advocates Leverage Impact

Volunteers, donors, advocates and partners create a safe and healthy community for everyone.

OUR REACH



Expanding Impact

Programs and services that have an impact throughout Washington state and beyond.



Helping Kids Thrive

Every parent wants the best for their child.

Parents are engaged in early learning programs to help their children succeed in school. Child care providers, educators, parents, and families participate in OC programs that promote high quality early learning programs and support child development.

STATS

479 Children

prepared to enter kindergarten ready to learn by participating in Head Start and Early Childhood Education and Assistance Program.

35 Children

who were homeless or in crisis were able to stay and play in a safe, appropriate setting thanks to emergency child care vouchers.

70 Children ages 0-3 & their families participated in Early Head Start to support development during the child's first few years of life.

1,022 Children with special needs connected with a medical provider through SEAS (Single Entry Access to Services) and also accessed family resources for housing, food, insurance and other needs



2018 HIGHLIGHTS

Working to expand preschool, child care opportunities

More children were able to go to preschool in 2018 thanks to a new Head Start classroom in Lynden, WA. Two half-day preschool programs, Bellingham's Birchwood Elementary and Blaine's Primary Schools, were extended into full-day services.

The need for child care escalated in 2018 and families seeking child care faced high costs plus the increased possibility of being turned away due to lack of capacity. One local provider had a waiting list of more than 300 children. OC worked to support child care providers and expand child care options throughout the Pacific Northwest. In 2018, Child Care Aware of Northwest Washington, in partnership with Imagine Institute, hosted Q & A information sessions about how to start a child care business.



Data shows children in Head Start and Early Childhood Education and Assistance Program preschool programs consistently do better in school than their peers.

- (WA Educational Research & Data Center, May 2018)





Access to Healthy Food

Healthy food is necessary for all of us.

Nourishing food supports the well-being of families, children, and aging neighbors. In 2018 volunteers served hot meals at Maple Alley Inn in Bellingham and distributed food at the rural East Whatcom Regional Resource Center in Kendall. OC also offers a food assistance program and a child care nutrition program in three counties.

STATS

296 Households

could meet their essential food needs because they enrolled in the Basic Food Assistance program.

26,141 Meals served

in 2018 by 65 weekly volunteers who work in the kitchen and garden at Maple Alley Inn to provide hot, nutritious meals.

1,689 People

who were hungry enjoyed a hot, nutritious meal at Maple Alley Inn.

603 Children

enjoyed healthy meals and snacks at child care each month.

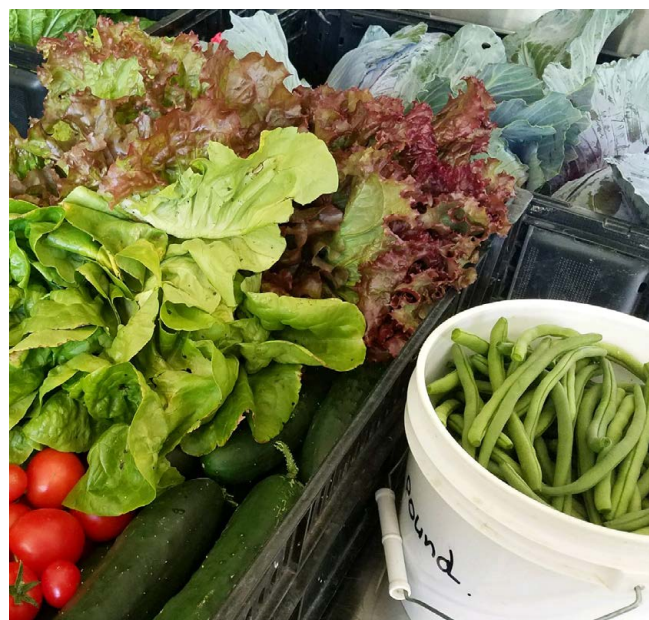


2018 HIGHLIGHTS

Growing food resources to help meet nutritional needs

Maple Alley Inn, the OC's hot meals program, served 26,141 meals in 2018, a 33% increase over the previous year. The community garden at Faith Lutheran Church helped provide fresh produce for this program.

Food Lifeline delivered food twice a month to the East Whatcom Regional Resource Center in Kendall. With volunteers and support of the Foothills Food Bank, individuals and families in this rural community had increased access to fresh food.



The community garden at Faith Lutheran Church provided 4,000 pounds of fresh produce in 2018 for the Maple Alley Inn hot meals program.





Increased Financial & Job Skills

Job and budget skills boost individual potential.

When people increase their employment and financial skills, they increase their ability to fully realize their potential and contribute to their community. Families and individuals are moving toward financial stability through supportive-employment programs, financial classes, coaching on budgeting, renter education, and savings.

STATS

268 People

gained job skills and work experience to improve their financial situation.

163 People

received tax assistance so they could complete their tax returns.

120 People

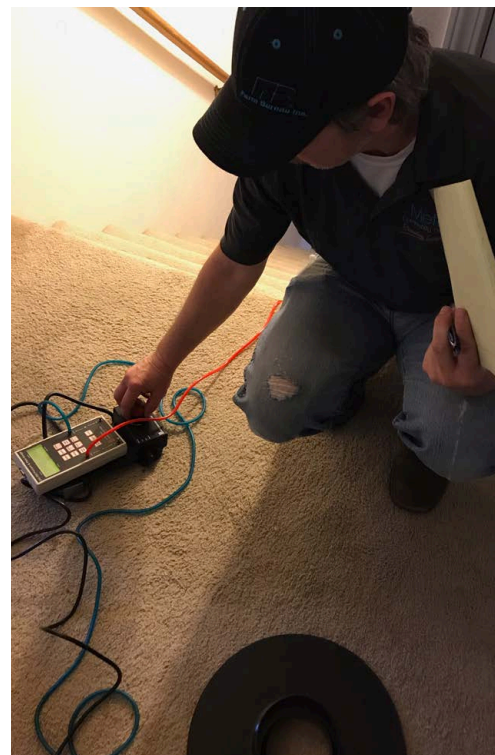
improved their budgeting skills by attending financial literacy classes.

460 Child care providers

received training, support and resources to offer high-quality services at their workplace.

440 Trainees

improved their job skills for work in the energy efficiency and weatherization industry through Building Performance Center trainings.



2018 HIGHLIGHTS

Expanded employment services

At the beginning of 2018, a new Vocational Computer Lab was up and running at 625 Cornwall Ave in Bellingham with Employment and Financial Stability classes.

In September a new program, Foundational Community Supports (FCS), was also put in place to offer support for housing and employment. The comprehensive approach focuses on housing security and financial stability, recognizing it's so much harder to find and keep a job when you are homeless, or constantly hungry, or have other unmet needs. Through FCS, OC provides support for housing and employment benefits including career explorations, job search, benefits counseling, and job retention.

"Since I had gone through a lengthy period of unemployment several years ago, I expected a similar experience again. However, this time I had help from the Opportunity Council. In addition to getting job leads and helping me prepare for interviews,...my employment specialist made sure I had all the tools necessary to apply, interview, and eventually land a new job. With genuine caring and support, I can honestly say it felt like we had taken the journey together from beginning to end, and I believe that made all the difference."

- Basic Food and Employment Training (BFET) program customer





Providing a Warm, Safe Home

We all need a home.

A safe, healthy, and affordable home is essential to a family's well-being and the cornerstone of stability. As housing costs continue to increase, OC worked to develop affordable housing, offer eviction prevention, and keep homes warm and safe.

STATS

256 Aging clients

continued living independently in their own home with support from Chore volunteers.

51 Households

completed energy upgrades through the Community Energy Challenge.

9,791 Energy assistance grants

to individuals and families helped keep the heat and lights on.

137 Households

participated in the energy conservation education program, learning how to conserve energy so they could cut costs and stay warm.

93 Homes

were weatherized to improve comfort and affordability.

25 Home repair projects

ensured home safety and durability for individuals and families

1,638 Households

were able to get or maintain housing in Whatcom (1,304*), San Juan (52) and Island counties (282). *Includes both OC housing programs plus Whatcom Coordinated Entry services in partnership with local housing providers.

696 People

experiencing homelessness were contacted quarterly (on average) by the Whatcom Homeless Outreach Team (HOT).

2018 HIGHLIGHTS

Addressing housing needs with big and tiny projects

In 2018 OC continued to focus on retaining or developing affordable housing in Island, San Juan and Whatcom counties. A new 40-unit supportive housing complex in Bellingham, 22 North, was completed in November and fully leased by the end of the year.

OC staff also teamed with volunteers from Lummi Nation and Dawson Construction to build a tiny home utilizing donated and surplus building materials from the 22 North housing project. The tiny home was donated to Lummi Stepping Stones, a program that addresses unmet needs for Native Americans who are affected by homelessness on and off the Lummi reservation.

An OC Housing Lab opened in Bellingham in May to offer help with housing searches, applications, renter education and referrals, plus eviction prevention and roommate/landlord mediation. The lab meets the needs of people who are homeless and served over 270 households in the first six months.



"Thank you for this help. It allows me to stay in my small home at 82 years old."

- Energy Assistance program customer

"I was extremely pleased and grateful for the wonderful service provided by this weatherization program, and hope it continues into perpetuity."

- Weatherization customer





Information & Referrals

Information is key to meeting our needs, or knowing where to start.

Community resource and referral centers provide a safe, respectful place where anyone can go to get help solving a problem or challenge in their life. This is a highly utilized resource and the first point of entry to many of OC's services in Island and Whatcom county sites. The OC also partners with family resource centers on Lopez, Orcas, and San Juan islands.

STATS

nearly
10,000 People
accessed services and
information through:

- Bellingham office
- Oak Harbor office
- East Whatcom Regional Resource Center (EWRRRC) in Kendall
- Resource centers on Lopez, Orcas and San Juan islands

241 Individuals
enrolled in health care programs
through navigators in Island Co.
and EWRRRC.

2,582 Families
found information for suitable
child care options through Child
Care Aware.



2018 HIGHLIGHTS

Expanded access to information and resources

In February 2018 OC opened an office in the South Whidbey Community Center in Island County to expand the capacity to serve residents of Whidbey Island. Services at this site include Supportive Employment, Energy Assistance, Homeless Student Stability programs and more.

Expanding access, supporting Veterans

The Opportunity Council helps Veterans overcome the challenge of accessing information or enrolling for benefits. There are support services offered and information for Veterans in the community in a variety of ways.

- Island County hosted its 5th annual Veterans Resource Fair in 2018 with over 20 vendors providing information about housing, health care, employment, and other services.
- The Supportive Services for Veteran Families (SSVF) grant was renewed in 2018 to provide services and housing for Veterans in Island, San Juan, and Whatcom counties and subcontract for services with partners in Clallam, Jefferson and Skagit.
- OC staff, including a Veteran benefits specialist and Veteran housing case manager work one-on-one with Veterans to provide information, assistance and support.

"I didn't know what I was going to do when I came in. I left with so much helpful information about things I didn't know existed. Thank you for being there!"

- I&R customer





Partners & Advocates Leverage Impact

You play a key role.

As volunteers, donors, advocates and partners, you create a safe and healthy community for everyone. OC is proud to work with a long list of partners, both organizations and individuals, who make a real impact in the community.

STATS

552 Individual, corporate,
& foundation donors
gave generously to impact the lives of people in
the community.

31,496 Miles
were driven by Chore volunteers to get veterans and
clients to medical appointments or other vital services.

18,202 Volunteer hours
were matched with 118 partner organizations through
the OC's Volunteer Center of Whatcom County.



2018 HIGHLIGHTS

San Juan listening forums were co-hosted by the Opportunity Council in November, as part of Governor Jay Inslee's Poverty Reduction Work Group. The listening forums are designed to inform strategies that address intergenerational poverty and learn about innovative best practices to develop better relationships between state policies and the unique needs of local communities.

In December, the Community Energy Challenge wrapped up a multi-year grant with partner agency Northwest Clean Air Agency to provide energy efficiency improvements resulting in a reduction of greenhouse gas emissions.

"I have noticed [my client's] mental health has become more stable for longer periods of time. Having a consistent, stable relationship in her life seems to contribute greatly to her success."

- Deanna, Volunteer Chore Program.

"Every minute I've volunteered has made my life richer. The people to who I deliver food are always gracious and appreciative. I think this service does more for me than it does for them!"

- Chore program volunteer





Expanding Services & Impact

OC services extended.

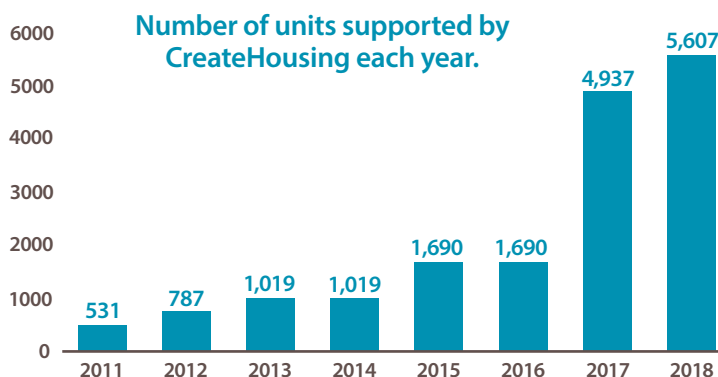
While most of OC's programs and services are concentrated in the Northwest corner of Washington State, the agency also takes on roles that have an impact throughout Washington and beyond.

STATS

5,607 Affordable housing units
units across Washington State were supported by OC's CreateHousing program.

440 Students
attended Building Performance Center's (BPC) 64 trainings: 59 trainings in Washington State and 5 outside.

\$44 Million
was secured through the Energy Project to support energy assistance and weatherization services for households throughout Washington state who have low-incomes.



2018 HIGHLIGHTS

Programs that extend throughout the state – and beyond

The Energy Project is there to advocate for families who would be hit the hardest when utility companies raise their rates. The program negotiates settlements during utility rate increase cases to ensure low-income consumers are represented. A report released in June 2018 showed that over 12 months, this program secured nearly \$44 million for energy assistance and weatherization services for Washington state households who are low-income.

The Building Performance Center (BPC) provides trainings and certifications for building professionals. In 2018, BPC provided 64 trainings, 5 of them outside Washington State. BPC's hands-on approach and focus on quality helped people gain skills and knowledge in lead paint detections and safe work practices, mold prevention strategies, blower door pressure diagnostics, and more. These trainings improved skills for energy auditors, workers and inspectors, and Healthy Home Evaluators.

CreateHousing is a subsidiary program of the OC that partners with housing developers throughout Washington State to support the development of and access to affordable housing. This partnership currently supports over 5,000 units of affordable housing at 28 housing complexes throughout Washington State. Since 2011, CreateHousing has provided information and resources for residents, supported service providers by notifying them of vacancies, and supported Opportunity Council services by generating additional funding.

"The BPC (Building Performance Center) offers all of my training and certification needs for the Weatherization Assistance Program. The staff continues to support my growth long after the training is over by remaining in contact if I ever have questions. Great staff. Great facility."

- Michael Linarez

Weatherization Program Manager / Quality Control Inspector / Building Analyst
Metropolitan Development Council, Tacoma WA



Board and Staff Leadership

Our team is committed to our mission.

The experience, knowledge, and commitment of OC staff and board members contribute to solutions that address issues our community cares about. Our tripartite board represents policy makers, people who use our services, and diverse community sectors.

The agency has nearly 300 employees who work to bring services to people in Whatcom, Island, and San Juan counties with some programs serving Skagit and Snohomish counties.



Board of directors & agency directors

OC Board of Directors

President: **Steve Jones**
Vice President: **Rick Hughes**
Secretary: **Rebecca Boonstra**
Treasurer: **Paul Stermer**
Past President: **Mamie Lackie**
At Large: **Mark Tompkins**
ELAFS Policy Council Chair: **Sara Hutchinson**
Hannah Stone, Barry Buchanan, Christianna Clinton
Ozell Jackson, Sandy John, Ramona Menish
Katrice Rodriguez

Agency Directors

Executive Director: **Greg Winter**
Associate Director: **Sheri Emerson**
Island County Director: **Lisa Clark**
Chief Financial Officer: **David Foreman**
Community Services Director: **Debbie Paton**
Early Learning and Family Services Director: **David Webster**
Whatcom Homeless Service Center Director: **Mike Parker**
Home Improvement Director: **Ross Quigley**
Energy Project Director: **Shawn Collins**
Housing Development Director: **Jenny Weinstein**

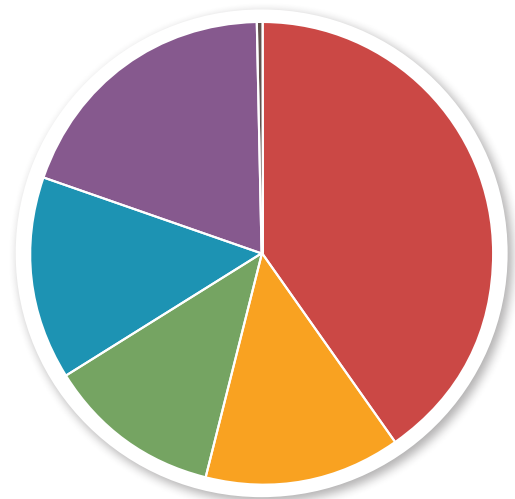
Financials

A well-planned budget meets our needs today and plans for the future.

To do this work effectively requires careful planning and adequate financial resources for the civic, social and economic well-being of our communities.

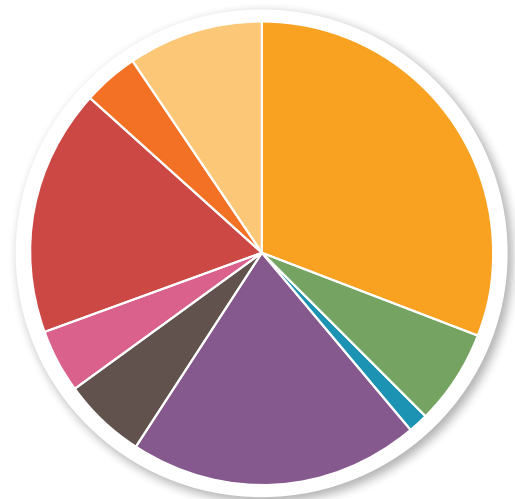
2018 Revenue

Federal	\$13,631,574
State	\$4,541,952
Local Government	\$4,089,735
Fee for Service	\$ 4,737,234
Donations & Foundation Grants	\$6,584,142
Interest & Other Income	\$47,138
Total Revenues	\$33,631,775



2018 Expenditures

Early Learning & Family Services	\$9,418,399
Weatherization and Home Repair	\$1,956,398
Energy Policy	\$406,582
Housing Services	\$6,171,154
Housing Enterprise	\$1,766,773
Community Services	\$ 1,386,768
Energy Assistance	\$5,168,098
Other Supporting Services	\$1,232,286
Administrative	\$2,778,692



Total Expenditures **\$30,285,150**

Revenue in Excess of Expenditures **\$3,346,625***
(Reserves and capital project funds)

Total **\$33,631,775**

**Includes board designated reserves, net revenue from fee-for-service and social enterprise activities, grants designated for capital projects, and restricted donations carried forward to support programs in 2019.*

Your Support Makes A Difference

Donors, funders, volunteers and supporters equip us to help realize our vision of a safe, just and thriving community.

INDIVIDUALS

\$500+

Jo Ann Albers
Dr. Philip and Judith Andress Jr
Ann Beck
Jim and Nancy Bjerke
Teresa Bodensteiner
Leslie Boswell and PJ McGuire
Lee and Prentiss Cole
Joann Collinge
Judy and Dale Cosgrove
David and Jayme Curley
Kate Davies and Chris Norman
Laurie Do Thang
Gary Dolin and Martha Vernier-Dolin
Glenn Eckard
Sheri and Jim Emerson
Pam Englett
Dudley Evenson
Dr. Marcus Fairbanks and Ms. Cathy Fairbanks
Tim and Leslie Farris

Anthony and Elizabeth Finrock
Deborra Garrett
Dale and Robin Geleynse
Stephen Gockley and Ellen Posel
Mary Hanson
Donna Hartsell
Kathy and Paul Hess
Julie Johansen and Bob Moles
Damani and Rebecca Johnson
David Johnson and Shelly Justis-Johnson
Sara Johnson
Karen Kaufmann
Alan Kemble and Sally Albers
William Kern
Elizabeth Kerwin and Jillian Froebe
Doug Klunder and Camille Matern
Dr. Richard and Linda Krebs
Noriko Lao
Christine Larsen
Sara Larsen-Cooper
Steve and Rhonda Lowry
Melinda Lunsford

Dr. David Lynch and Ms. Tisch Lynch
Christina and Bradley Lyons
Bob and Georgia MacGregor
David and Margaret Macys
William Magowan
Miriam Margulies
Robert Marshall and Elizabeth Pernotto
Betty McClendon
Kelly and Kristin McCullough
Margaret Metzger
Robert and Marilyn Monahan
Steven and Eileen Nelson
David Neubeck
Michael New
Christopher and Astrid Newell
Marlene Orlick
Susan and Jeff Palmer
Ingeborg Paulus
Ron and Jan Pierce
Dr. Michael Pietro and Ms. Christine Kubota
Carol Prato
Dorothy Regal

Katrice Rodriguez
Dean Rofkar and Louise Salem
Candice Rohr
William Schenken
Brittney Segel
Janet Simpson
Karen Sloss
Stan and Marian Snapp
Richard and Rosalind Spitzer
Paul and Becky Stermer
Stacy Sullivan
Mark and Carmen Tompkins
Charles Tucker
Kathryn Utter
Kathy Veterane and Robert Bates
David Webster
Dawn and Bill Wefer
Scott Wheeler
Amanda White and Greg Winter
Kevin Wilkinson
Rodrick Williams
Stephen and Diane Woods
Judy Ziels





\$100 – \$499

Jan Adams
 Steve & Deborah Adelstein
 Lorraine Affek
 Peggy Allen and Jim Hickey
 Peter Arneil
 Carl and Brenda Asplund
 Mary and Gerald Baldwin
 Lorraine Banning
 Kirsten Barron and Steve Brinn
 Betty Basham
 Mike and Diane Bates
 Ron and Cynthia Bauleke
 Jeanette Beck
 Catherine Beecham
 Helene Berg-Kolin
 Paul Berube
 Marijo Berwick
 John and Nancy Blume
 Rebecca Boonstra
 Brandon Diana Bork
 Jane Bright
 Marilyn Brink
 Pat and James Britain
 Peter Browning
 Robert Buchholz
 Frank and Willo Burgler
 Tawnya Bybee
 Gabriel Byram
 Jesse Caemmerer
 Ann and Donald Caldwell
 Robin and Yuki Caldwell
 Rob Camandona
 Jeanne and Bill Carroll
 Zoe and Leslie Casanova
 Rocky Champagne
 Corey and Janet Chaplin
 William and Susan Ciao
 Patricia Clark
 Richard and Karen Clark
 Terence Clark

David and Patricia Cohick
 Jollefern Cole
 Carol and Dennis Comeau
 Myra and Peter Corcorran
 Caroline and Joseph Correa
 Amy and Erich Cosgrove
 Susan Costanzo
 Ross and Barbara Craigie
 Wendy and Tim Crandall
 Andrea Crim
 Richard and Jonna Crow
 Ric Crowther
 David and Shari Cummins
 Tony Dabbs
 Sue Dabney
 Dan and Helen Dahlgren
 Victoria Dahlgren
 John Davies and Carol Kumeawa
 MJ Delahunt
 Margaret deMaine
 Kathy and Bill Denney
 James DePree
 John and Taylor DeWitt
 Jane Dieveney-Hinkle
 Marian D'Onofrio
 Kirk and Kirsten Eid
 Stew Ellison
 Heather and James Erb
 David Finet and Vicki Lippiatt
 Heather Flaherty
 David and Tanis Foreman
 Bob Fraser
 Bill and Jayne Freudenberger
 Ellen Gehling
 Gunter and Esther Golde
 Barbara and Larry Green
 Susie Greig
 Kathryn Hanowell and David McMurry
 Margaret Hardiman
 Walter and Linda Hardy
 Scot Harkins
 Margaret Hayes

Matt Hazenberg
 Elsie Heinrich
 Lenny Helfgott and Kathryn Anderson
 Harry and Liz Herdman
 John Hickman and Carolyn Blume
 Hickman
 Roger and Cathy Hinds
 Terry Hinz and Paula Kobos
 Marcy Hipskind
 David and Judy Hopkinson
 Forrest Hougén
 Antonia Ihry
 Julia and Walter Ingram
 Kay Ingram
 Rand and Dana Jack
 Eric Jacobs
 Abram and Carole Jacobson
 Liz and Van Job
 Marguerite Johnson
 Sheree Johnston
 Heidi Jones
 Mark Jones
 Nicole-Helene Jones
 Steve and Debra Jones
 Hank Kastner
 Joe Kazimer
 Beth Kelley
 Alan Kemble and Sally Albers
 Jaclyn Kersten
 Dale and Cheryl Kinsley
 Bob and Cindy Klein
 Mamie and Pat Lackie
 Laverne Lane
 Richard and Kerri Larrabee
 Rene Laventure and Matt Cleinman
 Joel Lawrence
 Adam Lent
 Tom Leuhmann
 Tracy Lewis
 Shing-Juan Liao-Root
 Mary Lindsey
 Stephen Liu and Elizabeth Gabay

Walter and Marilyn Lonner
 Deborah Loober
 Brian and Jean Lydiard
 Elaine and Brian Lynch
 Yvonne Madsen
 Elaine Maki and Richard Schillinger
 James and Susan Mancuso
 Elizabeth Mangan
 Tanya Marks
 Jonathan Martin
 Steven Mayo
 Charles and Cindy McCabe
 Mark McCartan
 Neil and Lisa McCarthy
 Pat McEvoy
 Amy and Phelps McIlvaine
 Iris McMahan
 Rob and Kelli Miller
 Jeanette and Bob Morse
 Anna Mostovetsky
 Richard and Phyllis Muehlhausen
 Jan Mustain
 Joyce Myhr
 Robin and Brenda Nicholson
 Claire Niland
 Joseph and Anne Nolting
 Don and Beverly Noyes
 George Oliver and Patricia Duhncrack
 Rich Olson
 Loretta Orr
 Ross Osborne
 Alistair and Norma Paton
 Debbie Paton and Mark Wickman
 Ethelyn Payne
 Kelley Peck
 Karin Pelan
 Lynne Pendleton
 Cindy and L. Dana Petersen
 Patricia Peterson
 Ken and Pat Pettichord
 Seth Pheifer
 Shellie Phillips



Vincent and Kathryn Piscitello
 Lisa and James Plenkovich
 Dick and Kay Porter
 Mrs. Powers
 Eugene and Amy Quinn
 Daniel and Deborah Raas
 Robert and Barbara Rahe
 Rhea Ramsay
 Donita Reams
 Tasha Repp
 Kay Rich
 William and Laura Rink
 Brenda Riseland
 Jon and Susan Rittmueller
 Sally and Kenneth Robinette
 Carol Rofkar
 George and Barbara Rofkar
 Julie Rofkar
 Tyler Rouse
 Peter and Gage Ruffatto
 Kenneth Russell
 Louise Salem
 Kay Sardo
 Sheldon Satterthwaite
 Karen and Greg Saupe
 Todd Schumann
 Harvey and Colleen Schwartz
 Karolyn Schwartz
 Karl and Louise Seck
 Charles and Phyllis Self
 Dan Shawley
 Flo Simon
 Cindy Sluys
 Carol and David Smith
 Kirk and Ann Smith
 Kristine Smith
 Michael Smith
 Bonnie Southcott and Ellen Harwick
 Donna and Donald Starr
 John and Sandie Starr
 Summer Starr
 Paul Stephenson
 James and Beverly Sturek
 Karen Summers
 James and Pamela Terhorst
 Brien Thane
 Cheryl Thompson
 Teresa Thornberg
 Chandra Troxell
 Diane and Robert Trunek
 Carletta Vanderbilt
 Bernell Walz
 Andrea and John Warner
 Ken and Phyllis Weber
 Henry and Teresa Weg
 Ann Welch
 John and Kathryn Whitmer
 Les Williams
 Kathie Wilson
 Larry and Molly Winton
 Susan Wood
 Ying and Suzanne Wu
 Molly and Lloyd Zimmerman

\$50 – \$99

Judith Akins
 Breck and Gretchen Anderson
 Lynn Berman
 Stephen and Judy Blum-Anderson
 Thomas Boucher
 Jean Brechan
 Karen and John Breedlove
 Grace Briskey and David McAdams
 Jerry Brown
 Beth Brownfield

Janet Brynjolfsson and Roy Grothe
 Kris Ann Bulcroft
 Thomas Burkland and Jacqueline Nicolai
 Stephen and Clara Jean Carmean
 Gordon and Sharon Clark
 Cheryl Collins
 Paris Conway
 Karen and Jesse Cook
 Lynn Cornwell
 Alison and Marc Costanza
 Bob and Dorothy Davis
 Jay DePree
 Kacey Emerson
 Maureen Enegren
 Sandy Erickson
 Elka and Myron Fink
 Robert Fodor and Thurid Clark
 Arline Fonda
 Sheila Fox
 Lisa Friend
 George and Nancy Gale
 Sally Gibbs
 Marie and Alfred Hamro
 Allison Hancock
 Gayle Helgoe
 Wendy Henerlau
 John Hill
 Rosemary Hostetler
 Marlene and Larry Jackson
 Ozell Jackson
 Brett and Janis Jacobs
 Susan Jay
 Elizabeth Jelineo
 Beverly Jones
 Lisa Keeler
 Craig and Julie Keyes
 Judy Lancaster
 Carol Landt and Mark Hubert
 Brandon and Robin Larson
 Geraldine and Doug Likely
 Sally and Tom Logothetti
 Fran Maas
 Jane Madden and Edwin Simmers
 Lynne Masland
 Maureen McCarthy
 Marilyn McClellan
 Peggy McCoy
 Nick and Mary Mele
 Ramona Menish
 Andrea Merrill
 Choice Meyer
 Paul and Roxanne Michael
 Marcy Mjelde
 Dawn and Jim Moore
 Frank and Liz Morrow
 Jan Polen
 Jen Rightsell
 Anita and James Rogers
 Michael and Barbara Ryan
 Margot Schenet
 Greg and Miriam Schwartz
 Sy Schwartz
 Sierra Scott
 Nicholas and Patricia Stigliani
 Barbara and North Storms
 Dave Trantham
 Robert and Betty Tull
 Barbara Wallace
 Julie Wasilewski
 Jenny Weinstein
 Veleta Young
 Andrew Zanchi
 Elsie and Richard Zarnowitz
 Kristin Zuanich



BUSINESS & ORGANIZATIONS

Amazon Smile
 Angus W. Graham, Jr. Family Foundation
 Bank of America Foundation
 Enterprise Holdings Foundation
 Fidelity Charitable
 Fred Meyer Foundation
 Jerry H Walton Foundation
 Mary H. Storer Foundation
 RiverStyx Foundation
 Schwab Charitable
 Skipping Stone Foundation
 Thomas and Martina Horn Foundation
 U.S. Bank Foundation
 Vanguard Charitable
 Whatcom Community Foundation
 Windermere Foundation Trust
 Catholic Archbishop of Seattle
 Christ the Servant Lutheran Church
 Christian Reformed Church
 Faith Lutheran Church
 First Congregational Church
 First United Methodist Church
 Garden Street United Methodist Church
 St. Paul's Episcopal Church
 St. Stephen's Episcopal Church
 Whidbey Presbyterian Church
 2 Roofs Real Estate Team
 Aetna, Inc.
 American Family Insurance Dreams
 Foundation
 Aslan Brewing Company LLC
 Avenue Bread
 Bank of the Pacific
 Barron Smith Daugert, PLLC
 Bay City Supply
 Bayou On Bay
 Belcher Swanson Law Firm, PLLC
 Bellingham Bar & Grill
 Bellingham Cold Storage
 Binyon Vision Center
 Black Drop Coffeehouse
 Black Sheep
 Blue Eyed Charlotte Inc
 Boundary Bay Brewery

Bramble Berry Inc
 Brandywine Kitchen
 Buri Funston Mumford & Furlong
 Casa Que Pasa
 Caz Energy Services LLC
 Chrysalis Inn & Spa
 Ciao Thyme Catering
 Cigna Health Care
 Cole Family Revocable Trust
 Community Food Co-op
 Cosmos Bistro
 Courtenay Excavating Inc
 CPR Cell Phone Repair
 Crossfit Chuckanut
 Daisy Cafe, The
 D'Anna's Cafe Italiano
 Dawson Construction Inc
 Diamond Jim's Grill
 Ebright Wight, Inc.
 Edward Jones
 Estate Of Jack Smith
 ExxobMobil Foundation
 Fairhaven Lions Club
 Faithlife
 Fat Pie Pizza
 Fiamma Burger
 Five Columns Restaurant
 Foothills Food Bank
 Friends Of The North Fork Community
 Library
 Goat Mountain Pizza
 Good Earth Pottery
 Gravity Payments
 Haulin' Ash Chimney Sweeps
 Heritage Bank
 Hilltop Restaurant
 Homeskillet
 HomeStreet Bank
 HUB
 Hughes, Rick
 IMCO General Construction Inc.
 Island Thrift Inc.
 Jay Shilhanek, Inc. P.S.
 JM Electric
 Kiwanis Club Of Oak Harbor
 Krell Apothecary Inc.

Kulshan Brewing Co
 Kulshan Community Land Trust
 La Fiamma Wood Fire Pizza
 Larson Gross PLLC
 Leaf & Ladle
 Lummi Indian Business Council
 Mallard Ice Cream & Cafe
 Mambo Italiano Cafe
 Maniac Coffee Roasting
 Mary Kudla and Allison Beezer
 Mercy Housing Northwest
 Mills Electric
 Mount Bakery
 Mykonos Greek Restaurant
 Nelson's Market
 Network For Good
 North Coast Credit Union
 North Puget Sound Brothers In Arms
 North Sound Accountable Community
 Of Health
 Northwest Chapter WSAAP
 Northwest Fence
 Northwest Youth Services
 Old Town Cafe
 Old World Deli
 On Rice Thai Cuisine & Spirits
 Overhead Door Company of
 Bellingham, Inc.
 Pacific Continental Realty
 Peoples Bank
 Pepper Sisters Restaurant
 Philadelphia Insurance Companies
 Phillips 66 Ferndale Refinery
 Phillips 66 Matching Gift Program
 Premera
 Puget Sound Energy, Murphy, Lynn
 Pure Bliss Desserts
 Ram Construction General
 Contractors, Inc.
 Rice Insurance, LLC
 Roberts, Hal and Mona
 Robin Holcomb Family Trust
 Robinson Hardwood & Homes LLC
 Rock and Rye Oyster House
 Rocket Donuts
 Rofmann, Inc.

San Juan County Health & Community
 Services
 Saturna Capital
 Savi Bank
 Shell Oil Company Foundation
 Sirena Gelato
 Sun Life Financial
 Sunnyland Properties
 Superfeet Worldwide
 Surety Pest Control
 Thai House Restaurant
 The Eleanor and Henry Jansen
 Foundation
 The Filling Station
 The Local
 The Seattle Foundation
 Toakom Asian Bistro
 Truist
 U.S. Bank
 U.S. Bank, Bellingham
 UBS Financial Services
 Umpqua Bank
 United Way of Island County
 United Way of King County
 United Way Of The National Capital Area
 United Way of Whatcom County
 Vanderpol Realty
 Veterans of Foreign Wars
 VikingFood
 VP-4 OSC
 Wander Brewing LLC
 Washington State Association Of Head
 Start and ECEAP
 WECU
 Whatcom Artists Of Clay and Kiln
 Whatcom Educational Credit Union
 (WECU)
 Whidbey Island Rollergirls
 Windermere Management By Ebright
 Wight, LLC
 Woods Coffee
 Yorkston Oil Co.
 Zane Burger

All efforts are made to accurately compile our list of supporters who made a financial contribution of more than \$50 in 2018.

If you feel an error has been made, please contact our office by phone, 360-734-5121, or email, info@oppco.org.

2018 Annual Report

**Whatcom County**

1111 Cornwall Ave., Bellingham, WA 98225
360-734-5121 | 800-649-5121

Island County

1791 NE 1st Ave., Oak Harbor, WA 98277
360-679-6577 | 800-317-5427

Building Performance Center

3406 Redwood Ave. Bellingham, WA 98225
360-734-5121

www.opppo.org